

# DJ TM Behringer CMD DC-1 All-in-One Traktor Mapping



## Mixer Mode (Default)

The default Mixer Mode provides access to core transport and mixer functions of Traktor, including Hotcues, Filter, Volume, Gain and LO EQ to give as much mixing control as possible with this compact controller. Functions such as Keylock, Sync and Flux Mode control are also provided.

Shrink the Decks and expand the Library into fullscreen view by pressing the Browse button (Function Button 8). Browse the Library with the main Browse Encoder at the top of the controller. Push the Encoder to load the highlighted track into the active deck - which is selected with the buttons immediately around the Browse Encoder. Hold SHIFT and turn the Browse Encoder to navigate the Browser Tree, and hold SHIFT and press the Encoder to expand and collapse tree entries. Hold the End List button (Function Button 7) and turn the Browse Encoder to jump to the Start and End of the current playlist.

Loop controls are also provided in the top right corner of the main Pads area. With Flux Mode enabled (Pad 1), set the Loop Size with Pads 14 and 15 and then hold Pad 16 (Loop Set) to activate the loop while the pad is held down. When Flux Mode is disabled, traditional loops are sized in the same way but the Loop Set button activates the loop and does not need to be held down for the loop to remain active - press the Loop Set button again to exit the loop.

Pitch Bending for beatmatching is performed by holding Pad 13 for Tempo Down adjustment and SHIFT + Pad 13 for Tempo Up adjustment.

The FX Mode and REMIX Mode buttons provide access to additional pages of the mapping for dedicated control of those functions. Note that these buttons must not be selected in order for this Mixer Mode page to be active. Please also refer to the FX Mode and REMIX Mode pages in this document.

**Knobs 1 - 4: Filter (Four Channel Mixer Layout C-A-B-D)**

**SHIFT + Knobs 1 - 4: Gain (Four Channel Mixer Layout C-A-B-D)**

**Knobs 5 - 8: Channel Volume (Four Channel Mixer Layout C-A-B-D)**

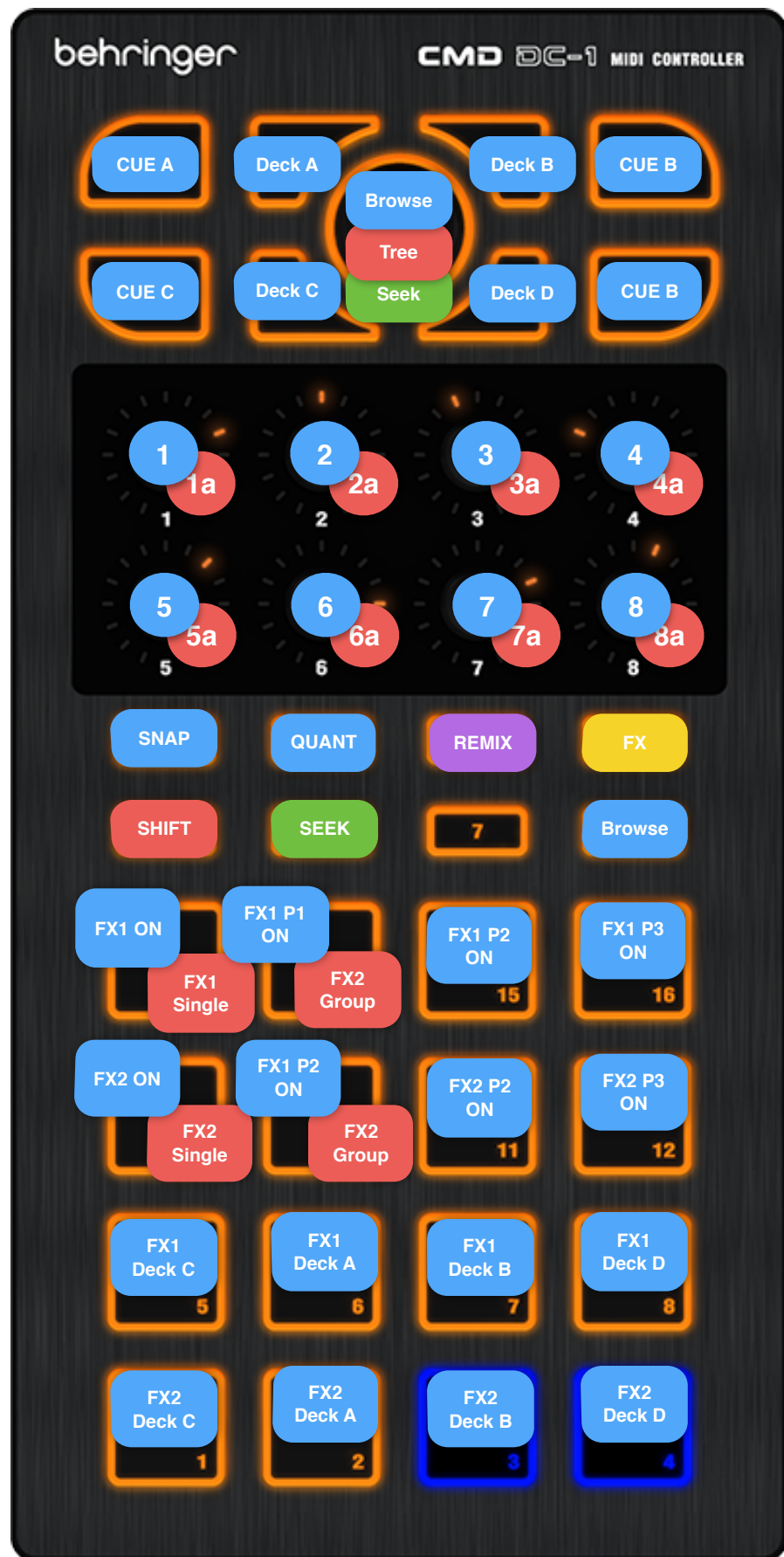
**SHIFT + Knobs 5 - 8: EQ LO (Four Channel Mixer Layout C-A-B-D)**

**Hold SEEK Button and turn BROWSE encoder to seek active deck.**

**FX Mode Button: Refer to FX Mapping Page**

**REMIX Mode Button: Refer to Remix Mapping Page**

# DJ TM Behringer CMD DC-1 All-in-One Traktor Mapping



## FX Mode (FX Units 1 and 2)

Press the FX Mode button (Function button 4) to enable this page. When pressing the FX Mode button the Encoder Knobs (1 - 8) LEDs and Pad LEDs (1 - 16) will change to indicate the current state of the FX Units.

This mode also includes the ability to manage FX selection (SHIFT + Knobs 1 - 3 and 5 - 7), single/group mode selection (SHIFT + Pads 9 & 10 and 13 & 14) and FX deck assignment (Pads 1 - 8). The FX On/Off and Parameter On/Off buttons are the first two rows of the pads (Pads 9-16).

When switching between Single and Group FX Mode with the SHIFT button, the Pad LEDs (9 - 16) will change to indicate Single Mode with one LED and Group Mode with Three LEDs.

### FX Unit 1

**Knob 1: FX Unit 1 Wet/Dry**

**Knob 2 - 4: FX Unit 1 Parameters**

**SHIFT + Knobs 1 - 3: FX Unit 1 Select FX**

### FX Unit 2

**Knob 5: FX Unit 2 Wet/Dry**

**Knob 6 - 8: FX Unit 1 Parameters**

**SHIFT + Knobs 5 - 7: FX Unit 2 Select FX**

# DJ TM Behringer CMD DC-1 All-in-One Traktor Mapping



## Remix Mode

Press the Remix Mode button to enable this page. In Remix Mode the Encoder Knob LEDs (1 - 8) and Pad LEDs (1 - 16) will change to indicate the current state of the active Remix Deck.

Note that the behaviour of the main Encoder Knob is different while in Remix Mode as it provides access to selection of the Remix Slot Pages (default) and Capture Source (while holding SHIFT).

The four buttons immediately surrounding the large Browse encoder at the top of the controller are used to indicate which Remix Page is active and will flash to indicate the active Remix Slot page. Pressing any of these buttons does not select a Remix page but will change the active deck (as per Mixer Mode). Turn the Browse Encoder to select Remix Pages.

The main Pads are illuminated BLUE if a sample is loaded into the slot. The Pads flash BLUE when a sample has been triggered or is playing.

Holding SHIFT will display and allow changes to the Keylock, FX, Monitor and Punch states for each of the sample cells (cells 1 to 4 from left to right).

**Knobs 1-4: Slot Filter Adjustment**

**Knobs 5-8: Slot Volume Adjustment**

**Browse Encoder Knob: Remix Page Select**

**CAPTR + Browse Encoder Knob: Capture Source Select**

**Pads 1 - 16: Trigger Sample**

**SHIFT + Pads 1 - 4: Sample Punch Mode**

**SHIFT + Pads 5 - 8: Sample Monitor Mode**

**SHIFT + Pad 9 - 12: Sample FX Mode**

**SHIFT + Pad 13 - 16: Sample Keylock Mode**

**HOLD REV + Pads 1 - 16: Reverse Sample**

**HOLD CAPTR + Pads 1 - 16: Capture Sample**

**HOLD DELETE + Pads 1 - 16: Delete Sample**



# DJ TM Behringer CMD DC-1 All-in-One Traktor Mapping Installation Instructions

1. Click on the Gear icon in the top right corner of Traktor to open the preferences window.
2. Select the Configuration Manager from the left navigation pane. (Figure 1)
3. Disable any existing CMD DC-1 mappings by setting the *In Port* and *Out Port* to NONE (Figure 2).
4. Click on the Add button and select *Import TSI - Import Other*. (Figure 3)
5. Locate the *DJ TM Behringer CMD DC1 Mapping TSI* file and select Open.
6. Set the *In Port* and *Out Port* fields to *CMD DC-1*. (Figure 4)

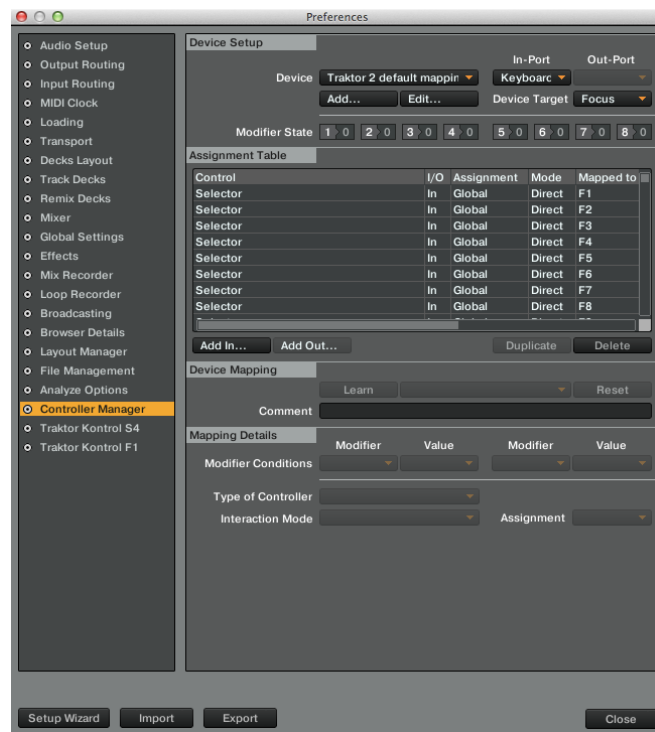


Figure 1 - Open Controller Manager

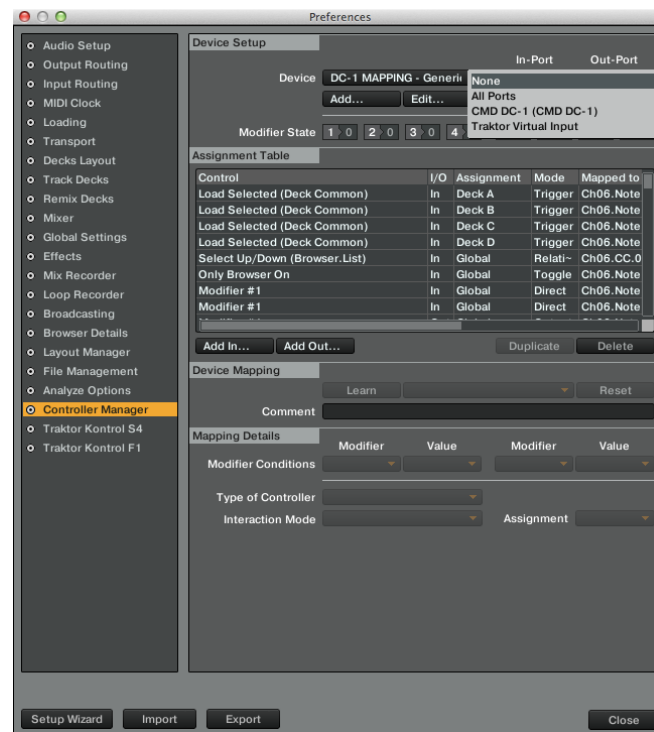


Figure 2 - Disable any existing CMD DC-1 controller mappings by setting the *In Port* and *Out Port* fields to NONE.

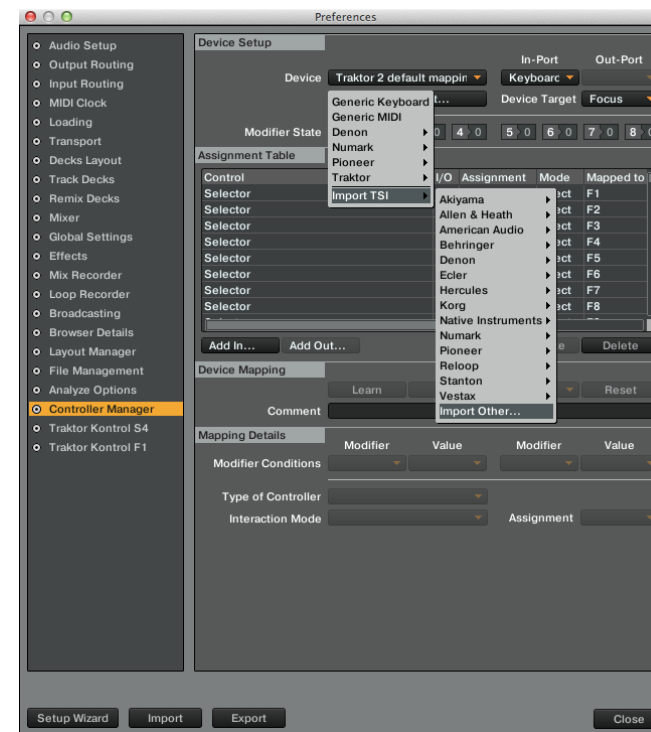


Figure 3- Click on the Add Button and Import TSI -> Import Other. Locate and open the DJ TM TSI file.

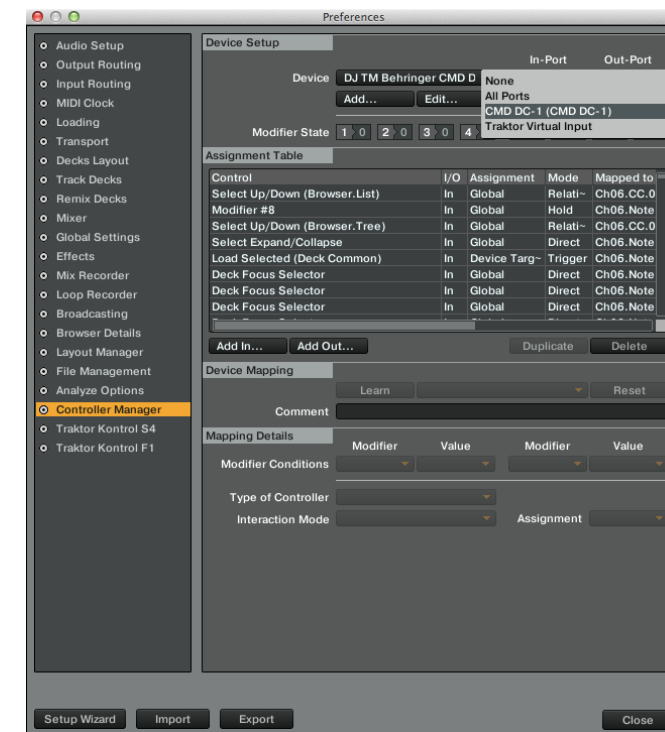


Figure 4 - Set the *In Port* and *Out Pot* to *CMD DC-1*

# DJ TM Behringer CMD DC-1 All-in-One Traktor Mapping

## Version History and Notes

### Version 1.2 November 2014

- Fixed issue where Remix Slot 3 Cell 2 (Pad 11) would also trigger Remix Slot 2 Cell 2 (Pad 10) due to incorrect duplicated mapping.

### Version 1.1 September 2014

- Fixed issue where Keylock selection also triggered Play/Pause function (SHIFT Modifier M8=0 not correctly used for Keylock function)
- Added function to jump to top and bottom of library list while holding Function Button 7 down and turning the Browse Encoder (Added Modifier M4=1 while Button 7 Hold and added new Select Top/Bottom mapping with M4=1 condition).
- Modified Loop Active behaviour to always illuminate Pads 14 - 16 when loop is active. Previous version illuminated all pads in Flux Mode and only pad 16 for normal loops. (Replaced Loop Set Outputs with Loop Active Outputs for Pad 14 - 16)
- Added Loop In (SHIFT + Pad 14) and Loop Out (SHIFT + Pad 15) function.
- Added Tempo Reset Function on SHIFT + Pad 1 when in Mixer Mode.

### Known Issues

- If multiple Remix Cells are triggered within the same Quantization period, those cells flash until pressed again due to Remix Cell waiting state mapping capability of Traktor 2.6.8. Behringer original Remix Deck Mapping has same issue.
- Knobs 1 - 8 can become slightly out of alignment with software knobs due to encoder sensitivity. Encoder LED rings do not jump to alternate value (such as when pressing SHIFT) when turned beyond full range of software knob. Behringer original Mapping has same issues.